



 **INOXline**  
STAINLESS STEEL POOLS



## EUROPE'S LEADING MANUFACTURER OF POOLS AND POOL ENCLOSURES

Diamant Unipool, s.r.o. has grown from a small family business into a leading technological company in the swimming pool industry over the course of 30 years of improvement and constant innovation. Since its inception, the company has successfully completed more than 25,000 projects, making it one of the leading pool manufacturers in Europe. In recent years, the company has experienced dynamic growth, significantly expanding not only its product portfolio but also its territorial coverage.

Our products are synonymous with modern design and first-class quality. We continuously expand both our production facilities and the technological base on which we develop our product lines.

We are fully aware that it is you, our customers, who allow us to do the work we enjoy and find fulfilling. That is why customer satisfaction and the good reputation of Diamant Unipool, s.r.o. are our primary goals.



Ing. Martin Lukáš - owner



In 2020, a new 7,000 m<sup>2</sup> production hall for stainless steel pools was completed and all production is carried out at our 17,000 m<sup>2</sup> site in Valašské Meziříčí.

## FOR YOUR STYLISH HOME

High-quality, stainless steel pools are becoming more and more popular. This is not only due to the modern, timeless appearance of the material and its simple elegance, but also thanks to the unique properties of stainless steel, such as resistance to frost, heat and UV radiation. The smooth stainless steel surface also provides perfect conditions for optimal hygiene while minimizing maintenance. Its greatest advantage, however, is its lifespan.

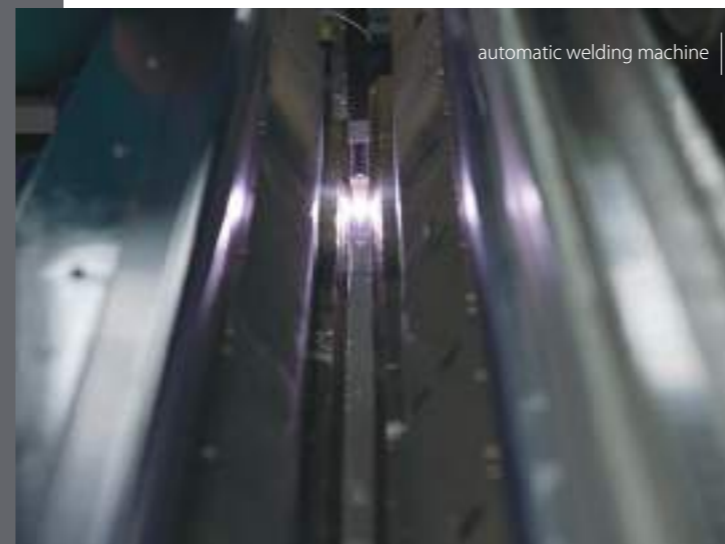
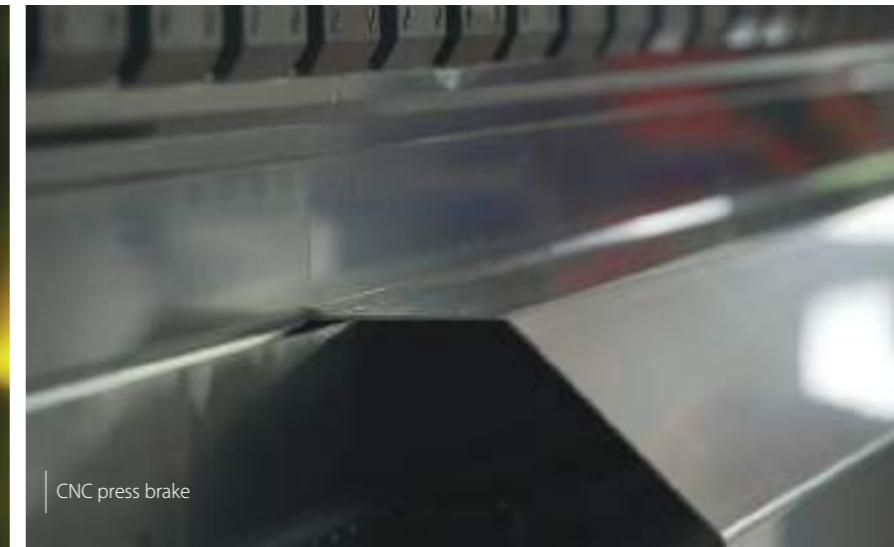
**STAINLESS STEEL**  
POOLS INOXline





## A STATE-OF-THE-ART POOL PRODUCTION PROCESS

- ▶ production begins with the preparation of the documentation
- ▶ stainless steel sheets are cut and the holes created using CNC laser technology
- ▶ walls and bottom sheets are folded with a CNC press brake
- ▶ treads are pressed into the bottom and step sheets using a CNC punching press
- ▶ the bottom and steps are welded with an automatic welding machine
- ▶ longitudinal and vertical welds are robotically welded
- ▶ pool reinforcements and attachments are prepared
- ▶ steps, benches, and components are welded to the pool walls
- ▶ the welds are chemically cleaned, and the entire pool is passivated
- ▶ bracing is installed, and the pool is packaged for transport



## UNIQUENESS of DIAMANT INOXline pools

### 1. ENTIRELY WELDLESS WALLS



The INOXline pool proudly features walls that are entirely weld-free up to a length of 10 meters. This unmatched characteristic ensures perfectly straight walls and eliminates the risk of corrosion. Its appearance remains flawless, with no unsightly welds along the entire length of the pool.

### 2. USE OF HIGHLY ADVANCED TECHNOLOGIES



Only Diamant INOXline pools are welded on a state-of-the-art robotic line, ensuring the unique quality and aesthetics of the welds. We are the only manufacturer on the market using this revolutionary technology for pools. The quality of the structural welds is not subject to human variability and meets the highest standards. Other specialized welds are completed by highly trained welders, who then perform all necessary quality checks.

### 3. „AL-FA“ ALL in FACTORY SYSTEM



We deliver the pool fully finished and as a single compact piece directly to the site. This allows us to shorten installation time and reduce associated costs. Stainless steel pools, pre-fabricated at the factory, result in less debris, noise, and foot traffic at the installation site. Projects can be completed in less time and are ready for water filling within a few hours of installation. Leak-proofing, passivation, and insulation are all carried out at the factory.





## BENEFITS YOU WILL APPRECIATE

### 1. REINFORCED WALLS

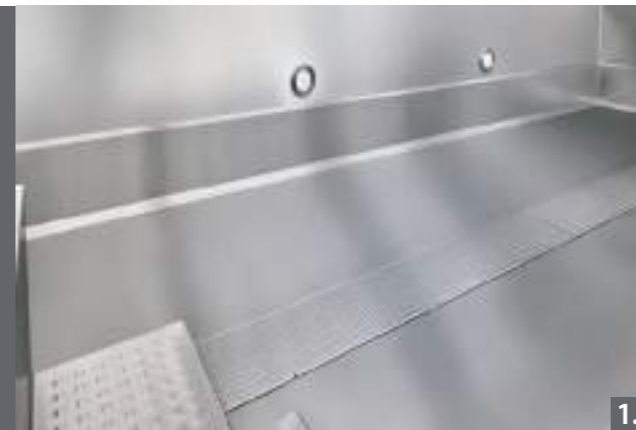
The walls of the pool are reinforced with two horizontal folds to ensure the highest possible stability and strength of the entire structure.

### 2. INTEGRATED INSULATION AND REINFORCEMENT

The walls and floor of the pool are delivered to the installation site including insulation and reinforcement. The insulation on the pool wall is from 2 to 5 cm thick, on the bottom it is 10 cm.

### 3. STAIRS AND BOTTOM WITH RAISED ANTI-SLIP SURFACE

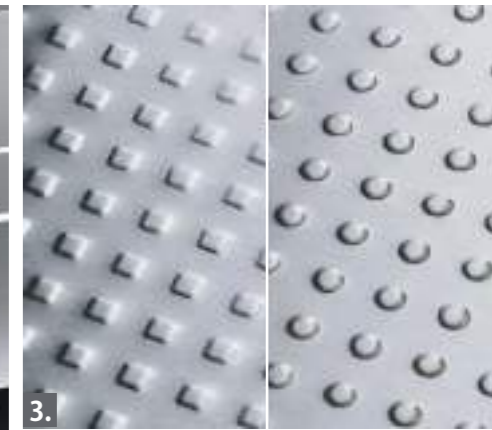
The stairs, benches and bottom (on request) have an aesthetic raised-square or raised-circle pattern, which ensures safe use without the risk of slip-ping.



1.



2.



3.

### 4. STAINLESS STEEL COMPONENTS

INOXline pools are equipped with all-stainless steel components from primary manufacturers. The components are welded directly to the pool-body plates, without the use of screws or seals. The great advantage of this approach is to minimize the risk of any future leakage.

### 5. MAIN DRAIN CHANEL

This specific system ensures uniform, optimal, water circulation and highly efficient water cleaning. The channel, with its anti-slip surface, runs the full length of the pool and is equipped with multiple inlet holes. No nozzles are needed on the walls and so no pipework is required around them. The bottom suction is integrated into the drain channel.

### SHAFT FOR SLATTED POOL COVER

The shaft allows the underwater-level pool-cover to be installed in a panel on the shorter side of the pool. The cover itself, therefore, does not interfere with swimming and is completely covered with a removable panel to ensure maximum safety.



4.



5.

# THE FUTURE BUILT ON STAINLESS STEEL

# Modern, exclusive and clean design



# Long service life without loss of quality



# Hygienic, smooth and non-porous surface with antibacterial effects



# Color fastness and high mechanical and thermal resistance



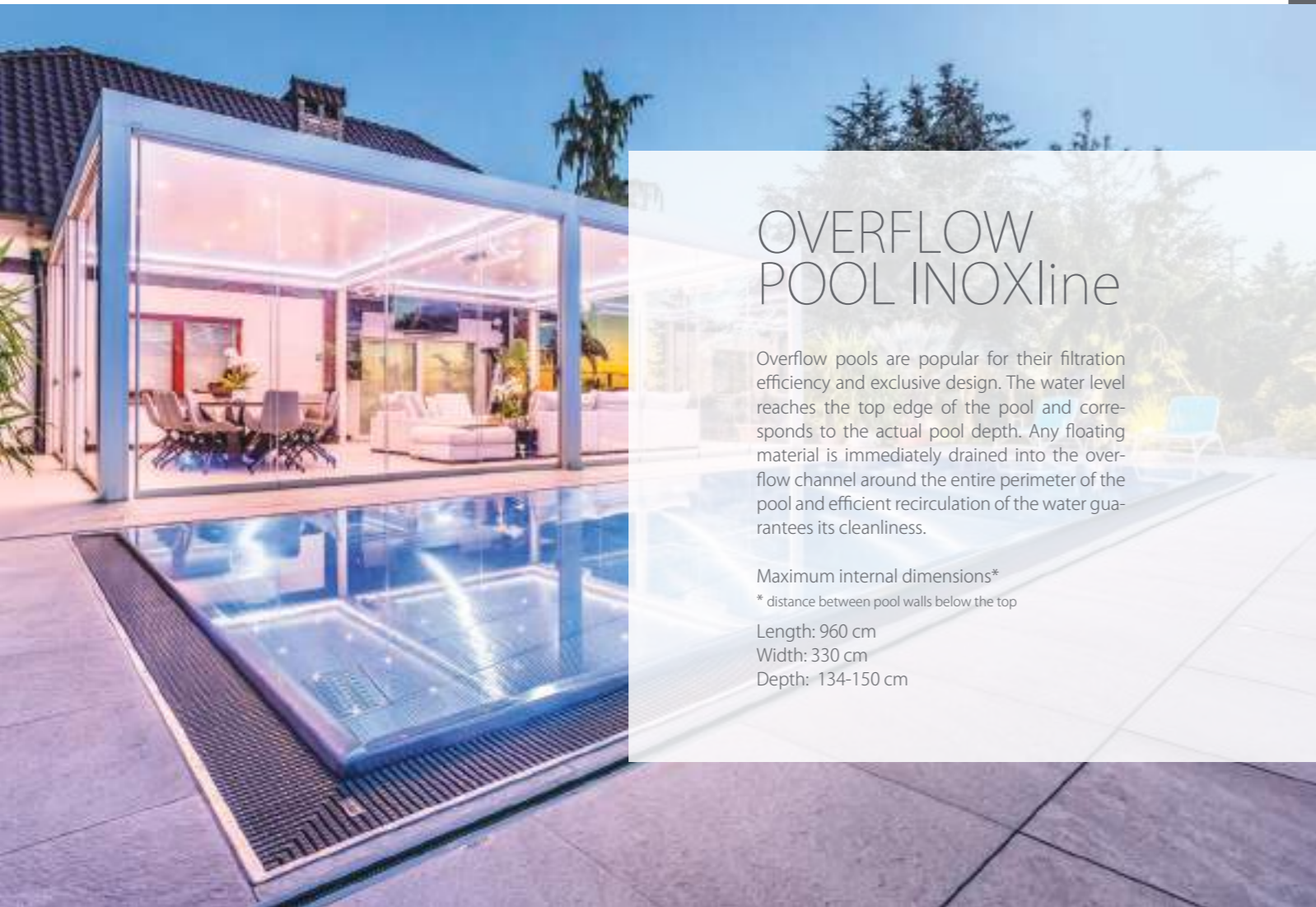
# Easy maintenance and low-cost operation



# 100% recyclable



The high-quality AISI 316L stainless steel used for Diamant INOXline swimming pools offers a range of excellent production options and guarantees long lifespan, maximum stability and durability. The steel known as "Austenitic stainless steel" is an alloy of several metals, such as chromium, nickel, carbon and molybdenum. It is a multifunctional material that gives the pool a fresh, luxurious and modern look and is an ideal choice for outdoor use.



## OVERFLOW POOL INOXline

Overflow pools are popular for their filtration efficiency and exclusive design. The water level reaches the top edge of the pool and corresponds to the actual pool depth. Any floating material is immediately drained into the overflow channel around the entire perimeter of the pool and efficient recirculation of the water guarantees its cleanliness.

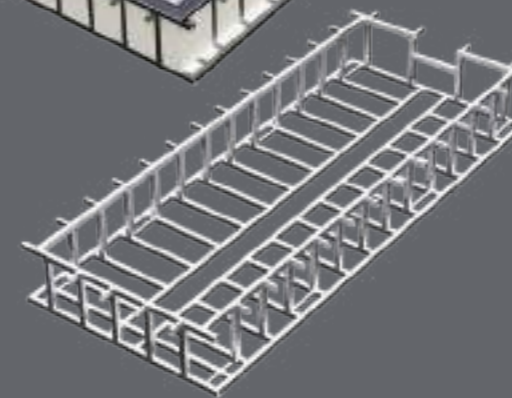
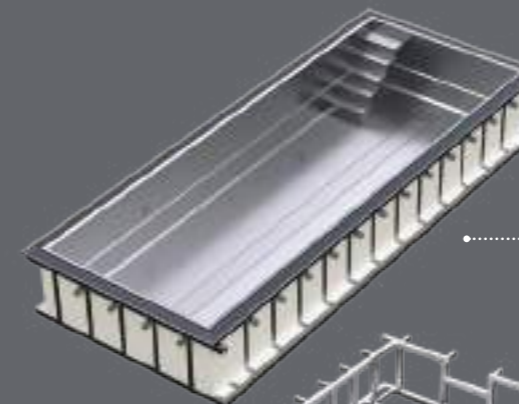
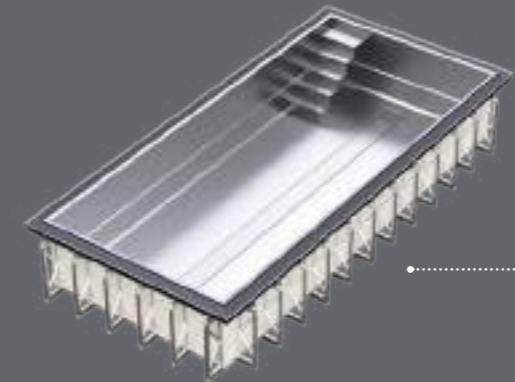
Maximum internal dimensions\*

\* distance between pool walls below the top

Length: 960 cm

Width: 330 cm

Depth: 134-150 cm



## INSTALLATION VARIANTS

### STANDARD WITH REINFORCEMENTS

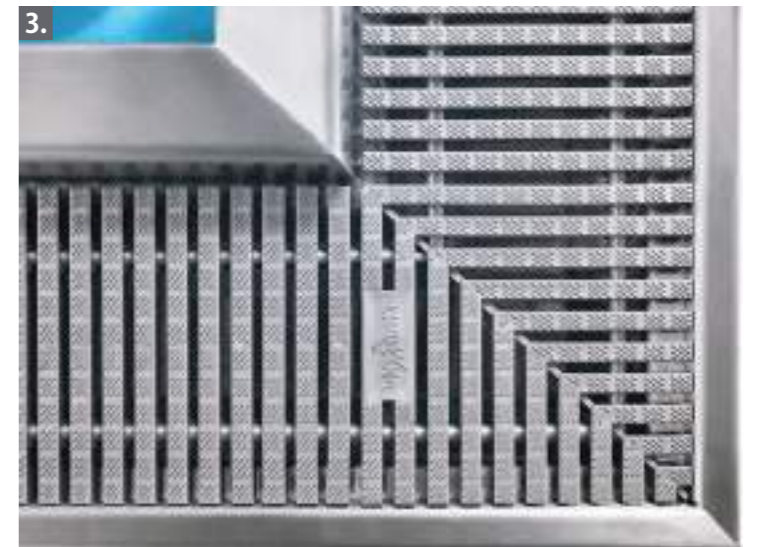
In-ground pool for concreting or backfill. Version for poured concrete or gravel backfill. Installed and anchored to a concrete foundation base with side-supports. After anchoring, the pool is filled with water and backfilled with poured concrete or gravel.

### FREE-STANDING

Above-ground pool, free-standing construction - self-supporting model with a solid frame, when embedment is not necessary. The pool is anchored to a concrete foundation base for correct levelling.

Ensures ease of integration into any setting, so the product will surpass any project requirements. Recommended for terraces, roofs or for sloping terrain.





### 1. EASY CLEAN OVERFLOW CHANNEL

The overflow channel with its Easy Clean system does not contain any internal reinforcements, its strength being ensured by an external structure. This gives the advantage of simple, fast, obstruction-free, mechanical cleaning.

### 2. V-FLOW SILENT SUCTION

Specially designed drains from overflow channels optimize the flow of water and thus ensure its fast outflow. Furthermore, they reduce noise by up to 50%, compared to standard overflow channels.

### 3. DIAMANT DESIGN OVERFLOW GRATING

Our newly developed and highly functional stainless-steel-like grating is made of high quality, durable polypropylene. This ensures rapid, effective drainage. The choice of material completely eliminates the possibility of corrosion in this otherwise very exposed area.

## SKIMMER POOL INOXline

The skimmer pool is the most widely used type, especially for private projects. It is a simple, efficient system with trouble-free operation. Water from the pool is drawn into a collector - the skimmer - from where it is pumped to the filtration system.

This is a popular solution for those who require the luxury of a stainless steel garden pool with a minimum of operational intervention.

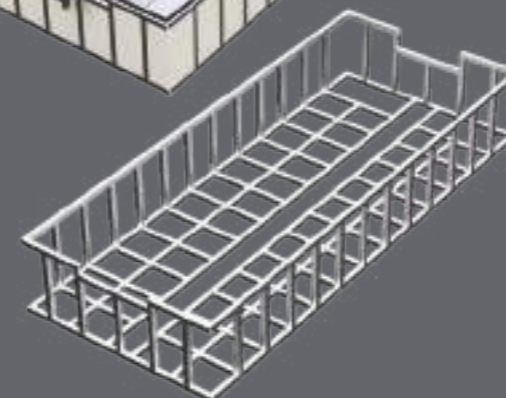
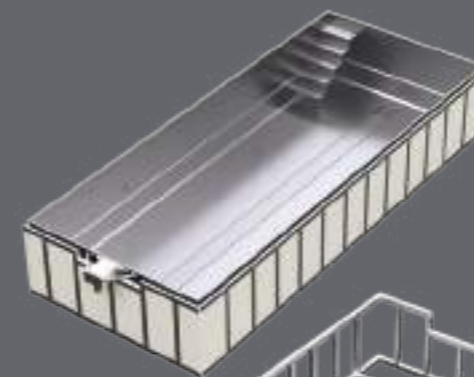
Maximum internal dimensions\*

\* distance between pool walls below the top

Length: 1000 cm

Width: 350 cm

Depth: 140-150 cm



## INSTALLATION VARIANTS

### STANDARD

In-ground pool for concreting. Right variant for poured concrete: the pool is placed on a concrete base and filled with water, while the side walls are backfilled with a dry or semi-dry concrete mix for reinforcement.

### FREE-STANDING

Above-ground pool, free-standing construction - self-supporting model with a solid frame, when in-ground installation is not necessary.

Ensures ease of integration into any setting and so the product will surpass any project requirements. Recommended for terraces, roofs or for sloping terrain.



## POOL ENTRANCES & REST BENCHES

Choose the entrance staircase to your pool according to your wishes. The stair treads have an aesthetic pattern of raised squares or circles, which ensures their safe use without the risk of slipping.

A comfortable rest bench will not only provide you with a relaxation zone, but can also be used to store the slatted pool cover.



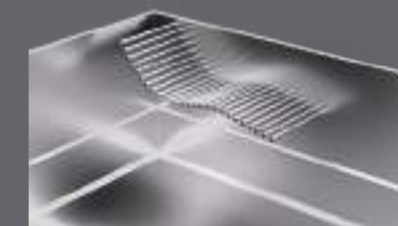
tubular bench



bench for slatted pool cover



step with reinforced bench



tubular water bed



steps along the entire pool ISTF



square diagonal steps ISTJ



square corner steps ISTB



cantilevered steps ISTX



square steps ISTC



Counter current systems



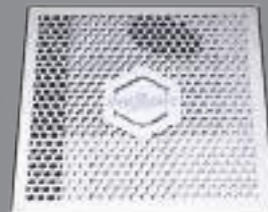
Skimmers



Massage systems



Nozzles



Bottom suction inlet



Lights



## ACCESSORIES

INOXline pools are equipped with only the highest quality, branded components from our long-term partners. All components are rigorously tested and their high-quality stainless steel processing is a guarantee of long life and minimal maintenance requirements.



Diamant Unipool s.r.o. | [www.diamant-unipool.eu](http://www.diamant-unipool.eu) | [info@diamant-unipool.eu](mailto:info@diamant-unipool.eu)



**Diamant Unipool, s. r. o.**  
Bynina 186  
757 01 Valasske Mezirici  
Czech Republic

All pictures shown are for illustration purposes only. Actual products may vary due to product enhancements.  
Copyright © 2023 Diamant Unipool. No part of this publication may be reproduced in print or digital form without the prior written authorization of Diamant Unipool.